



# estuary arts centre

214b Hibiscus Coast Highway, PO Box 480, Orewa | 09 4265570 | [www.estuaryarts.org](http://www.estuaryarts.org)

## Seeing Things Differently Artnexus 16th Annual Exhibition

29 August - 25 September 2016 Opening Saturday 3 September 3pm



Auckland Council  
creative  
COMMUNITIES  
nz



## InstaGran

### Exhibition

@EstuaryArtsCentreOrewa



Connecting our online  
generation with our  
offline generation  
through photography

3-25 Sept 2016

Featuring images of residents from  
Summerset Falls Retirement Village;  
plus great and very grand parents  
from within our local community



## Memories Exhibition

### Hibiscus Coast Printmakers

Estuary Arts Centre

214 B Hibiscus Coast Highway

3 - 25 September

Opens 3 September 3 - 5pm

Printmakers: Bev Head, Nichola Holmes,  
Lesley Gager, Sarah Philipson, Valerie Cuthbert,  
Lianne Timlin, Ursula Cranmer,  
Debbie Martin, Heather Campbell,  
Annie Walden, Barbara Croft,  
Chris den Hartogh, Vicky Wood,  
Sally Corbel and Nathan Joubert

## Ruby Jude & Friends

Art Heals... It washes away the dust, the  
debris, the sadness of everyday life with colour,  
movement, form and a sense of place.

Tui Gallery





## News from the Manager

Well sadly no more exotic tales from faraway places to share with you in this newsletter. I am just excited that tomorrow is the 1st of September which brings the arrival of my favourite season Spring and now the end of winter illness. I hope to see you all at the opening of our 5 new September exhibitions on Saturday 03 Sept from 3 to 5pm

August brought about the annual audit and preparations for the AGM which will be held on Wed 28 September from 6.30pm in Studio 1. We have three Trustee positions available to be filled by creative, community minded people who are passionate about our arts centre and who would like to contribute to our long term strategic visioning. Nomination forms are available at reception.

## AGM 28 Sept 6.30pm All welcome

For the month of October we will be hosting the New Zealand Society of Mosaic Artists holding their annual award exhibition and conference which will include live demonstrations, master classes and speakers.



The “Any 1 4 T?” exhibition was well received and enjoyed by our visitors, and the large collaboratively made teapot certainly made an impression. Now the fundraising team is working hard on the High Tea which will be held on Sunday 06 November, so please support us and buy your tickets, treat mum or grandma to a fun day out.

estuary arts centre

27 Oct – 27 Nov '16

**HIBISCUS & BAYS ART AWARDS**

**Call for Entry**  
\$3000 Premier Award and Merit Awards  
Estuary Arts Centre, Orewa  
[www.estuaryarts.org](http://www.estuaryarts.org)

2015 Premier winner Barry Ross Smith



The 3rd Hibiscus and Bays Art Awards entries are due in by Monday 03 October so there is not much time to finish those artworks. Please remember that entire artwork is via a digital submission so you need only to send in your registration and photos or electronic images. To ensure the best result you need to take good quality, clear and sharp photographs. If this is too difficult I would recommend the services of a good photographer such as Lynda Kanji 021 045 0820.



## Tea Ceremonies talk & slide-show with Elena Renker

**NEW DATE:** Wed 21 September  
6-7.30pm \$5 p/p



## All About Collaboration

This exhibition is about the collaborative process in printmaking but it could be applied to any art form. Included are several different ways of approaching the idea of collaboration.

For example within the series of 5 prints in 'Leaving Your Mark', the idea is to work with other printmakers to produce a work that grows as each printer makes their individual mark over and/or around other marks.

As revealed in the progressive photos underneath each print, in many instances early marks are covered in some way by later marks, some are very strong either in colour or size or content, others are tiny, soft, light in colour or tone. At each stage, but particularly the later stages, the artist was forced to make a difficult decision about how all of these factors – size, form, colour or lack of it, tone and content – of their mark - would impact on the whole.

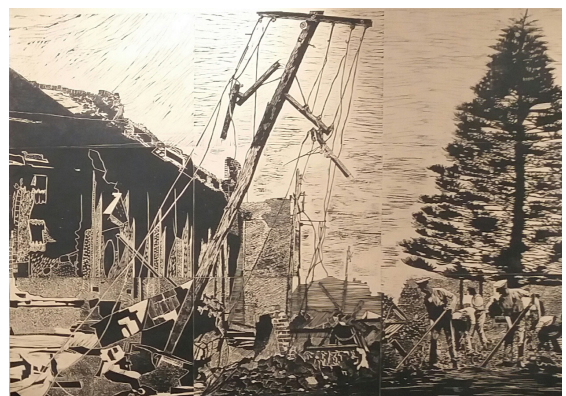
This is the heart of working in a collaborative way. And it can be terrifying. For not only is there much thought having to be given to the actual mark as mentioned, it still has to be printed perfectly, in the same place, repeatedly – for 14 sheets of paper in most cases, within a set time frame.

What happened in the example 'Homage to Time' made by local Hibiscus Coast printmakers, a theme began to emerge based on fond memories of people and places which added to the thoughtful consideration of what image was most suitable to follow what had gone before.

For prints like 'Earth to Sky', 'Windows' (the Mairangi Art Centre print) and the two large steam roller prints, the biggest challenge lies in bringing multiple plates together, inking, then printing all of them at the same time on the same sheet of paper. In each case the content is dictated by an overall theme or photo and this is open to individual interpretation by the artist.

Included in this exhibition are three small books. 'This City' made by Mairangi printmakers in 2006 was in response to a poem of the same name. Each artist took a verse and created an image that was a reflection of the sentiments in the lines.

'The Herding Instinct' made by Mairangi printmakers in 2007 was in response to a challenge by tutor Joan Taylor around the theme of dealing with multiples – 'An Exclamation of Tuis in a Kowhai Tree', 'A confusion of Gondolas' and 'A skein of Geese' are some examples from this. The final example, again made by **Mairangi printmakers, in 2009**, is one of miniature prints each less than 70mm in size and produced in concertina book form.





## From the NEW Chair



Well, just on 18 months ago a friend says to me, 'would you be interested in joining the Trust Board at Estuary Arts?' I instantly said yes. Then this chap Roy calls me, buys me one of the amazingly good coffees at Driftwood, we sit under a sun shade and I pass his selection interview. I was nominated and was accepted at the last AGM. Thank you Nikki, Gill & Roy for bringing me in, and thanks to Kim & Kris at the Centre and my colleagues on the Board, Phil, Gendi, Ursula and Kim for making me welcome and accepting my sometimes out-there sense of humour. I've loved it.

As Roy wrote last month, he has decided to move on from the role of Chair and devote more time to his personal life. That said almost every time I have visited since becoming the Chair his beaming smile has been around the place. He's continuing his vital role as a Tutor in the Education programme and doing his own art in that really interesting if somewhat strange environment to me, Studio 2 – kilns, wheels and the chemicals and colours that go with all that are not my world. The people who make those wheels spin to create art have my admiration.

I come from film. I've produced many drama based corporate educational films, a handful of documentaries in the same space, I've associate produced a handful of New Zealand's low-budget feature films and produced one of my own. I love working with and encouraging creative people.

So at the AGM I hope the Board will see fit to continue me as the Chair. I look forward to the chance to lead us onwards and upwards as we fully develop and realise the potential this beautiful expanded building on the Estuary offers the Coast and Auckland...and beyond.

In closing, I'll just say that yes, I am the John Davies you'll see on your voting papers at the Local Board elections this month. Former Chair Natalie grabbed me the other day and said you can only have my vote if you promise you can stay with the Trust and as its Chair. I assured her, and I assure you I can. Local Government in Auckland has a robust process for managing conflicts of interest. I've been to every Local Board meeting this year and they all start with a declaration of any interests, and if we here at the Trust are on the agenda, I say so and withdraw from those discussions and decisions.

Please come in, enjoy the Gallery, the cafe, and if I'm around, say hello. I look forward to meeting as many of our members as possible as soon as possible. Hopefully there's room in the newsletter to give you a photo so you can pinpoint me. I'm there virtually every Wednesday late morning and at most openings. Thanks for being part of the Estuary Arts Trust. Without our members, we don't exist....and of course that goes for our team, our artists and our tutors. We are a community within the community.

John Davies

**Notice of EACT  
AGM**  
on Wed, 28 Sept  
6.30pm  
Studio 1  
All Welcome

# A plea to all members to take part!!!

From the fund raising team

It is truly exciting that we have reached this point of need, the result of success, how great is that! Our major fundraiser takes the form of a traditional English High tea to be held in studio one.

**Date:** Sunday, 6th November

**Time:** 3 to 5 pm,

**Tickets:** \$25 per person or \$35 if you would like a glass of bubbly included

Sumptuous home cooked food, easy listening music, a variety of teas and lots of pleasant company a raffle and some selected items for sale

## What are we fundraising for?

With the exceptional popularity and success of the education wing in less than a year it has become very apparent that we urgently need more equipment so that programs can be expanded and developed. Some items are necessary to meet health and safety standards, some to simply deal with the accumulated made items and take them to the completed stage

Please put this into your diary or buy your tickets ASAP. Numbers are limited so be an early bird and make sure your place is confirmed.

To be involved even If you are unable to attend on the 6th November please consider donating towards the fund raising

Looking forward to meeting you at this event  
on behalf of the fund raising team

Natalie Fuge



### For studio two:

12 x new kiln shelves; one new kiln controller; 2x new wheels; more shelving; a heavy duty extractor fan for safe glazing, air brushing and running of latex moulds. 2x airbrushing kits with a compressor. A second hand drill press, band saw would be a great help.

### For the print studio:

An extractor fan for acid etching and solar etching; shelving and replacement blinds

### For studio one:

A heat pump; 60 folding chairs; lockers for Tutors, AV and sound equipment for presentations



# EDUCATION WITH SARITA TAYLOR

Kia Ora! I hope this newsletter finds our members all recovering from the ills and chills of the winter months and looking forward to Spring! I know I certainly am.

In education news this month, I was fortunate to attend the Semi Permanent Conference held at the Aotea Centre on Friday 12 August. This was a wonderfully inspirational conference with a great group of speakers from around the world. Most exciting for me, was to hear Tea Uglow from Google's Creative Lab in Sydney, who spoke about doubt being at the core of all creativity- a wonderful return to my university days where my brain enjoyed a philosophical workout. During the talk Tea acknowledged that she is transgender, and transitioning. The talk was made into a book, and will be available as a podcast. If you are interested, you can listen to a pod cast of her talk here...

<http://omnyapp.com/shows/sydney-writers-festival/t-l-uglow-on-doubt-from-montaigne-to-minchin>



Tea Uglow

Also inspirational was poet and artist Cleo Wade, her web page describes her as "blending simplicity with positivity, femininity and arresting honesty. With the belief that art is for all people, Cleo creates large scale public art pieces" (<http://www.cleowade.com/>). The topic of Cleo's talk was "Getting Good At Love" and, as flippant as it may sound (it wasn't!!), it struck a real chord with the mother and teacher in me, she spoke beautifully and created a real connection. Cleo has a huge Instagram following (follow her @cleowade... trust me, it is worth it!)



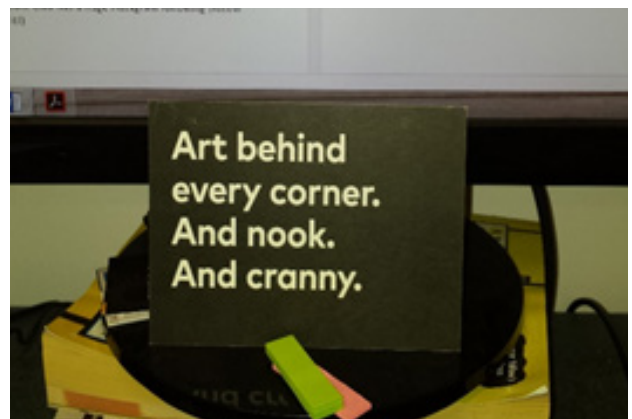
Cleo Wade at Semi Permanent

Now, back at the coal face...we are now half way through term three, our classes are ticking along nicely as we build this little creative hub. As mentioned in my previous newsletter piece, we had many late enrolments this term and are working hard to better streamline our enrolment systems to provide a better experience for students, tutors and administrative staff alike...watch this space, there will be more news to follow in this area.

As I write this, the September/ October School Holiday Programme planning is well underway, and will likely be ready for marketing by the time you are reading this (no pressure Sarita!). We also have some really exciting workshops coming up...pop in for a workshop programme, or keep checking the website.

As a parting winter gesture, part of the goody bag that came with my conference was a series of postcards, and this one resonated particularly with me...I can't think why, can you?! Here is, in situ at my desk!

Sarita Taylor  
Education Coordinator



# Weekend Workshops

Saturday 10 September

## **JBW1: Writing Your Life: An Introduction to Journal Writing and Life Writing with Jane Bissell**

Time: 10am-3pm

Price: \$65 EAC Member \$60

Min: 10 Max: 15

Studio 3

Age group: Young adults, Adults, Beginners

An introduction to the crafts of daily journaling and life writing. Learn the benefits of journaling for personal creativity and well-being and learn the value of "telling your story". Activities will include active discussion and writing exercises

Saturday/ Sunday 24-25 September

## **AMW1: Meet Your Inner Artist with Angela Murray**

Time: 10am-4pm

Price: \$140 EAC Member \$140

Min: 5 Max: 10

Studio 1

Age Group: Adults, complete beginners

Would you love to be creative, but believe you can't even draw a straight line? Then this fun workshop is perfect for you!

This is a 2 day programme for complete beginners to discover their creative side and learn the basics of acrylic painting. Definitely no previous drawing or painting skills required, just come along be prepared to have fun and meet your inner artist! Materials list provided on enrolment.

Saturday/ Sunday 8-9 October

## **KBW1: Character Marquette Sculpting with Kim Boyd**

Time: 10-3 Price: \$155 EAC Member \$140

Studio 2

Min: 4 Max: 10

Age Group: Beginners / intermediate / teens / adults

This two day workshop with expert sculptor Kim Boyd will take you through the process of armature making using wire and wood. You will take your character concept through to a sculpture study using sulphur free oil-based clay. Materials included.

Saturday 15 October

## **PSW1: Watercolours-Light, Bright and Sparkling with Pauline Smith**

Time: 10pm – 3pm

Price: \$95 EAC Member \$75

Min: 6 Max: 10

Studio 3

Age group: Adults, experienced only.

Watercolour – Light Bright and Sparkling a one day workshop for watercolour artists. In this intensive one day workshop you will learn to; paint multiple layers of colour, identify the dark and light sections of a painting, learn to retain your whites, develop an understanding of the importance of the passage of light through your painting, and practice the fundamentals of sound composition. This workshop is for experienced artists who have attended previous classes and workshops. Materials list will be sent on enrolment.

Saturday 29 October

## **GWW1: Watercolours with Ginette Wang**

Time: 10am-3pm

Price: \$105 EAC Member \$95

Min: 4 Max: 15

Studio 1

Age group: Adults, Beginners

Through Ginette's systematic teaching process, you will learn the fun of watercolours. Ginette will provide step by step guidance as you work through basic essential watercolour knowledge, brush techniques, tone, colour and composition. By the end of this workshop you will apply these techniques to your own final painting. Ginette is the 2016 winner of the Daler Rowney Watercolour Award at the Easter Art Show.

# Kids School Holiday Programme 26 Sept - 08 Oct *Theme: SPRING*



***email: [learn@estuaryarts.org](mailto:learn@estuaryarts.org)***  
***Booking essential***



## Ways to obtain information and to communicate with us

**Monthly newsletters** can be received:

- By mail
- By email
- On Facebook
- Hard copies at reception
- All newsletters including archived ones are on our website

**General information** can be found:

- Library noticeboards
- Estuary Arts Centre noticeboard
- Eventfinder
- The Big Idea - [www.thebigidea.co.nz](http://www.thebigidea.co.nz)
- Auckland Council website

**Contact a Staff or Trust Board member during office hours only:**

**Monday to Friday, 9am - 4pm only**

**Please note Weekends are manned by volunteers only**

- Manager: [manager@estuaryarts.org](mailto:manager@estuaryarts.org)
- Admin: [admin@estuaryarts.org](mailto:admin@estuaryarts.org)
- Education: [learn@estuaryarts.org](mailto:learn@estuaryarts.org)
- phone: 09 426 5570
- 021 172 4113 (Text Kim)
- Post a letter to PO Box 480, Orewa

## Membership Renewals are now due for 2016/2017

- *Single Membership only \$35*
- *Couples / Families only \$45*
- *Students / Beneficiaries \$25*

*We rely heavily on your membership to run this arts facility.*

*Remember that you receive discounts on art classes, discounts at art shops, are able to vote at the AGM which will be held on Wed 28 September from 6.30pm*