



# estuary arts centre

214b Hibiscus Coast Highway, PO Box 480, Orewa | 09 4265570 | [www.estuaryarts.org](http://www.estuaryarts.org)

1 to 28 May 2017 Exhibitions



Jo Dixey



Jill Bryce



Kerry Cline

**G1 & G4: Road to Colour** "Contemporary Quilts"  
**G2: Jill Bryce** "Coastal Landscapes"  
**G3: Kerry Cline** "Silk and Paint"

## Hibiscus Hospice Art Exhibition and Sale



**Queen's Birthday Weekend 1st - 5th June 2017**

Estuary Arts Centre  
214B Hibiscus Coast Highway Orewa

**Preview and Auction Night:**

Thursday 1<sup>st</sup> June, 7 - 9pm, \$25 per ticket  
(includes wine & hors d'oeuvres)

**Ticket Sales:**

Hibiscus Hospice (09) 421 9180  
or book online at [www.hibiscushospice.org.nz](http://www.hibiscushospice.org.nz)

**Public Exhibition Dates:**

Entry with a gold coin donation  
Fri 2<sup>nd</sup> - Sun 4<sup>th</sup> June, 9.00am - 4.00pm  
Monday 5<sup>th</sup> June, 9.00am - 2.00pm

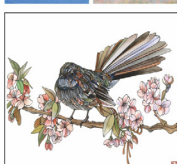


A Hibiscus Hospice  
Fundraising Project

Supported by



**Harcourts**  
Tandem Realty



Hibiscus Coast Writers Inc. and Estuary Arts Centre  
Present:  
"Poetry and Art"

# Brushed Words

**12 June to 02 July 2017**  
**Venue: Estuary Arts Centre**

Image: Elaine Matthews Venier



Estuary Arts Centre  
214b Hibiscus Coast Highway Orewa 09 426 5570  
E: [manager@estuaryarts.org](mailto:manager@estuaryarts.org) W: [www.estuaryarts.org](http://www.estuaryarts.org)  
Open Daily 9am to 4pm FREE ENTRY



May 2017 - Newsletter



## News from the Chair

The Trust Board met again just a few days ago, our first meeting for a little while. Our key projects for this year remain the move of our office upstairs and the creation of a new website that will takeover registering members and non-members using the many courses and events we offer. You could clearly identify the progress both projects provide for the Centre.

The office move achieves two things for us, both major steps forward, but admittedly not in a way that you'll readily see and identify with. The first step forward will be one of health and safety. At the moment, the current office is confined, full of trip hazards and lacks good natural light and airflow. Upstairs a large open plan office will provide three safe work stations, a small meeting area and natural light in abundance. Behind the walls upstairs are windows with views over the Western Reserve and the Estuary. An air reticulation system will give good airflow for our dedicated team and the natural light and airy feeling of the room will offer a sense I hope of delight across the room. We also gain a safely accessed secure storage area where the current office is. This will be used to bring all the gallery display plinths stored outside the four walls inside for safe access.

The website is exciting. It streamlines a myriad of manual systems built up as needed over the years and will make the registration and payment process all very simple and automatic. It will make the education wing investment even more amazing as we see record membership numbers and people coming through our courses on a constant upward trend. It's a real delight to watch the Centre grow and at the same time be part of working out ways to consolidate and best capitalise on that growth.

Hopefully come AGM time you'll see both these projects complete and working for your Centre and your interaction with it.

Meantime, how about your personal art education? How are you doing and how can we at Estuary help? Visit and see for yourself.

Kind wishes to you all  
John Davies



School holiday highlights

## REFLECTIONS with Kim Boyd

Well the EAC makeover is well under way and you will start to visably see the transformation unfolding. The old KFC building has a new fresh lighter and more sophisticated look which is just in time to celebrate our 10th anniversary in operation as an arts facility.

We experienced a break in over the School holidays and our brand new industrial Ash Air compressor was stolen, this has been a big set back for us and if you know anything or have seen anything suspicious please could you contact the Orewa police constable on 09 945 2169.

The April School Holiday programme was a roaring success, we did not have to cancel any classes and most classees were fully booked. Thank you to all our innovative and dedicated tutors and volunteers who helped make it so much fun.

In the main gallery the walls are adorned with a plethora of bright and vibrant colours expertly crafted into large textiles called "Road to Colour". This group of quilting enthusiasts who call themselves "Colour Quarterly" meet at All Things Patchwork to inspire, learn and share their love of colour, fabric and the art of making. Using fabric designed by Kaffe Fasset, Anna Maria Horner, Amy Butler, Cotton & Steel, just to name a few, the resulting quilts are a collection of contemporary modern day quilt making. None of the work is for sale but one quilt is up for raffle, so please support the centre and purchase your raffle ticket next time you are in. The Quilt by Rebecca Owen will be drawn on 30/6/2017.

Coming up in June is an exciting creative collaboration with the Hibiscus Coast Writers Inc where our artists have taken a poem and created an artwork. Pictured on the right is "Conversations with a two year old" by Tut Blumental.

Then on 28 July we will be offering a fantastic fundraiser / event with Samantha Copland from Perfume Playground where you will get the chance to hear all about perfumes and will create your very own fragrance. Early bird tickets will go on sale shortly. Please email or phone the Centre to express interest in this evening event.

Kim Boyd



### Opportunities for Artists:

#### Puppetry and the Art of Illusion Festival 2017

03 to 30 July 2017

During the two-week Festival of Puppetry and the Art of Illusion from 10 to 23 July 2017 there will be an opportunity to exhibit your Performing Objects or artworks inspired by all things puppetry in the static exhibition from 3 July to 30 July 2017.

#### 'EACT Annual Members Award Exhibition'

01 August to 03 September

Entry forms available on the website. You must be a paid up 2017/2018 member in order to enter. The new membership starts 01 July 2017.

#### 'Keeping Abreast' - A group exhibition encouraging artists to reflect on Breast Cancer Awareness

25 September to 29 October

Entry forms available on request, email [manager@estuaryarts.org](mailto:manager@estuaryarts.org)



# Upcoming Workshops

## **LHWS: Doing It Differently with Lindsay Hey**

**Dates:** Sat 6 May/ Sat 10 June/ Sat 1 July/ Sat August 5

**Time:** 10am-3pm

**Duration:** 20 hours over 4 days

**Price:** \$75 per day or \$250 for series EAC Member \$60 per day or \$220 for series

**Min:** 6

**Max:** 12

**Level:** Adults- Beginner- Intermediate

This set of four workshops follows the 2016 series of "Towards Abstraction". The students will be guided through the application of paint on a variety of surfaces, using an array of implements and techniques. Be prepared for some outstanding outcomes as you venture into the unusual and unknown. Please note that materials are extra and a materials list will be sent on confirmation.



## **HMW1: Fun with Mono Prints with Heather Matthews**

**Dates:** Saturday 28 and Sunday 29 May

**Time:** 10am-3pm

**Duration:** 10 hours over 2 days

**Price:** \$150 EAC Member \$130

**Min:** 6

**Max:** 12

**Level:** Adults- Beginner- Intermediate

"Fun with mono prints". Using acrylic paints and perspex as a printing block and various acrylic paints we will create art works which can then be used in many ways as gifts or personal, decorative items. Please note that materials are extra and a materials list will be sent on confirmation.

## **GWW2: Chinese watercolour & ink - Bird ( Level 1) with Ginette Wang**

**Workshop dates:** Saturday and Sunday 10 and 11 June

**Time:** 10am-3pm (both days)

**Duration:** 10 hours over 2 days

**Price:** \$200

EAC Member: \$180

**Level:** Adult - Beginners & intermediates **Min:** 6 **Max:** 10

This weekend workshop is designed by Ginette for people interested in Chinese watercolour and have no or very little experience and would like to enjoy painting birds with this fun and exciting medium. You will be introduced to the history, basic concepts, techniques, different types of Chinese painting paper and brushes through this 2 day bird painting workshop. Further Level one workshops will be offered throughout the

Year in the traditional Chinese watercolour genre's of birds, landscapes and animals. **An extra \$40 materials fee in cash is payable directly to the tutor at the commencement of the workshop.**

In 2018 a Level 2 course will be introduced for students who have completed Level 1.



## MW1: Acrylic Painting workshop with Barry and Lucy McCann

**Dates:** Friday 10, Saturday 11 and Sunday 12 November

**Time:** 9am to 4.30pm daily (1 hour lunch break)

**Duration:** 3 days / 18 Hours tuition / two tutors

**Price:** \$390 (50% non-refundable deposit required to secure your place, final payment no later than 09 Oct 2017)

**Min:** 12                      **Max:** 14

**Level:** Adults- all levels (please state your ability on enrollment)

**Materials:** not included

Full time Australian arts professionals Lucy and Barry McCann will be visiting New Zealand in November and we are excited to offer this three day Acrylic painting workshop. They have received numerous prizes and awards with their work represented in many private and corporate collections as well as featuring on the TV series "Put Some Colour in Your Life".

<http://www.mccannfineart.net.au> (under resources)

Learn from Lucy and Barry about their method of painting in acrylics to achieve a representational painting that has an "oil-like" look. The subject matter is supplied and the class will all paint from the same reference material. Having taught art for 16 years, they will structure the workshop to cover all ability groups. Please let us know on your enrollment form your level of experience and the type of subjects you are interested in painting. We will endeavor to incorporate the request into the subject material, if possible. Contact Julie Courtenay on 094260825 or email [tomcourt@xtra.co.nz](mailto:tomcourt@xtra.co.nz) if you have any questions. You will be given a material list on enrolment.



Little Green-Man Productions present

# HEAVEN AND EARTH

RANGI AND PAPA

**A MAGICAL GLOW-IN-THE-DARK MATARIKI PUPPET SHOW FOR ALL AGES**

**Papakura**  
Mon 26th June 6.30pm  
Tue 27th June 11am, 1.30pm  
Hawkins Theatre  
13 Ray Small Drive, Papakura  
Bookings: [education@hawkinstheatre.co.nz](mailto:education@hawkinstheatre.co.nz) or  
Phone (09) 2977712  
Koha Entry

**Porirua**  
Sat 1st July  
11am, 1pm, 3pm  
Pataka Art + Museum  
Cnr Norrie and Parumoana Streets, Porirua  
Bookings: [pataka@pcc.govt.nz](mailto:pataka@pcc.govt.nz)  
Phone (04) 2371511  
Koha Entry

**Estuary Arts Centre**  
214B Hibiscus Coast Hwy, Orewa  
July 8th-30th  
Bookings: [www.estuaryarts.org](http://www.estuaryarts.org)  
Phone (09) 426 5570

Come and create a Matariki- glow in the dark puppet!

Get to experience glow-in-the-dark characters from Heaven and Earth- Rangi and Papa!

Bring your creativity and have fun!

### SATURDAY 08 July

Glow in the dark Puppetry workshops

Session 1: 10am to 12noon

Session 2: 1pm to 3pm

Cost: \$5 per person

Limited times and spaces so book early!

Suitable for 6-12 year old's

### SUNDAY 09 July

Glow in the dark Puppetry workshops

Session 1: 10am to 12noon

Session 2: 1pm to 3pm

Cost: \$5 per person

Limited times and spaces so book early!

Suitable for 6-12 year old's



## **The current 2016/2017 Memberships end on 30 June 2017:**

Please renew your membership - on signing up you will receive a membership card with a unique membership.

On presentation of this card you will receive discounts at the following providers:

### **Orewa Framing Studio**

10% off all custom framing.

### **Silverdale Picture Framing**

10% off all art materials and artists canvases

### **Factory Frames / Mairangi Bay**

15% discount on all full custom framing services only

### **Frames by Daniel**

15% off all art materials not already discounted.

Special deals on canvases and boards when purchased in large quantities

### **The French Art Shop / Ponsonby**

10-15% off all art supplies

### **Gordon Harris – The Art & Graphic Store**

10% off art materials not already discounted. Applies to all Gordon Harris stores nationwide

### **Studio Art Supplies**

10% off all art materials not already discounted

### **Takapuna Art Supplies**

10% off all art materials not already discounted

### **The Canvas Company**

10% off all art materials and artists canvases



**Contact a Staff or Trust Board member during office hours only:  
Mon to Fri, 9am - 4pm only**

**Please note Weekends are manned by volunteers only**

- Manager (Kim Boyd): [manager@estuaryarts.org](mailto:manager@estuaryarts.org)
- Accounts (Kris Poole): [admin@estuaryarts.org](mailto:admin@estuaryarts.org)
- Education Kim-Leigh: [learn@estuaryarts.org](mailto:learn@estuaryarts.org)
- Phone: 09 426 5570
- 021 172 4113 (Text Kim)
- Post a letter to PO Box 480, Orewa, 0974
- Find us on Facebook
- Visit our websie [www.estuaryarts.org](http://www.estuaryarts.org)