



# estuary arts centre

214b Hibiscus Coast Highway, PO Box 480, Orewa | 09 4265570 | www.estuaryarts.org

## Exhibitions 06 June to 01 July 2018

Opening function Sat 09 June 3pm - 5pm



**G**<sub>allery</sub>  
**1**

**The Creative Photography Group**  
presents  
an Exhibition of Contemporary Photography  
Part of the Auckland Festival of Photography

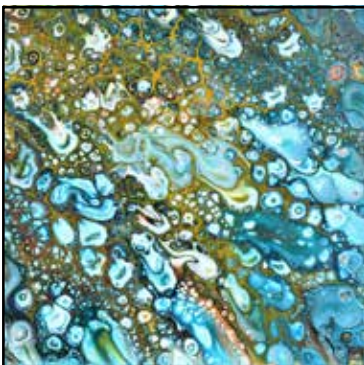
Sarah Spurr



**G**<sub>allery</sub>  
**2**

### “Splashes of Art”

Local artists Neville Bradley  
and  
Annette Denholm



**G**<sub>allery</sub>  
**3**

### “Fluid Imagination” by Simon Morris

*Simon works with Acrylic on canvas, layering paint to create each original artwork. His latest series uses bold colours on a clean background creating flowing organic patterns, inspired by his love of life and colour. His works have depth and flow, with each piece being left up to the individual to interpret.*

**G**<sub>allery</sub>  
**4**

### Printmakers Collaborative **Triangle Challenge**

**6th June - 1st July**  
opens 9th June  
3 - 5 pm

Education Foyer Gallery

Estuary Arts Centre  
214B Hibiscus Coast Highway  
Orewa

**G**<sub>allery</sub>  
**5**

### “Body Lines” Figurative drawing showcase

Countour drawing, blind drawing,  
left hand drawing and more ....



## Chair's Report

### Is art "I" or "We"?

I was driving along Esmonde Road just close to the motorway the other day and in a very difficult to stop and photograph location was a cut out of a person, just staring at the traffic. It was art. It was a little Banksy in style and I found myself contemplating, on my own, what it meant. Then I attend openings at Estuary and I just love the fact that I see groups of people, often families I suspect, standing discussing a piece and thinking about what it might mean to them.

It made me wonder, is art "I" or "We"? I suspect most art starts with "I". I have a vision for my movie, my sculpture, my painting, my mosaic, my clay ... and I start a process. Sometimes, that might, as with a movie, become a "We", but it feels like to me, most art starts with a singular vision.

But then when it comes to appreciation we will often experience it as part of a "We". Even if we visit a gallery, a cinema, a park or a streetscape on our own, we will more often than not find ourselves experiencing the art as part of the "We". Even if we don't discuss the artwork ourselves, we will overhear others and that will become part of our experiencing that work. It's interesting to contemplate the "I" and the "We".

Which transitions me to Estuary Arts. Our galleries fill on the decision of the "I". Our talented and wonderful Manager and Curator, Kim, seeks out and/or is presented with ideas or fully formed ready to use "events" and must choose based on her experience of the Estuary "We" what to give us. It's a big job. A challenging role. It's also probably, on my observation, quite the circus. So much talent to choose from, so many ideas to show, so many obligations to meet. It's a multi-faceted and wide work plan she must create and work towards.

In 2018/19 we face at Estuary Arts Centre the challenge of giving Kim a slightly larger internal "We" so that we, the external "We", (are you still with me) can enjoy that unique experience of an art gallery that has grown enormously can keep functioning without breakage (of the human kind). This means in essence finding a little more funding for some additional staffing. We'll chase the normal sources, but in this day and age we need to innovate around the issues of funding. If you have an idea as to where Estuary might seek new long term funding to assist with staffing, do feel free to let us know.

Enjoy June, the cool temperatures make it quite fun to wrap up and head in to the more pleasant climes of the galleries and be part of the "We".

Cheers

John Davies

Chair, Estuary Arts Centre Trust



**Hibiscus Hospice**  
ART EXHIBITION AND SALE

Queens Birthday Weekend - 1st - 4th June  
Estuary Arts Centre  
214B Hibiscus Coast Highway Orewa

Preview and Auction Night:  
Thursday 31st May, 7- 9 pm, \$25 per ticket  
(includes wine and hors d'oeuvres)

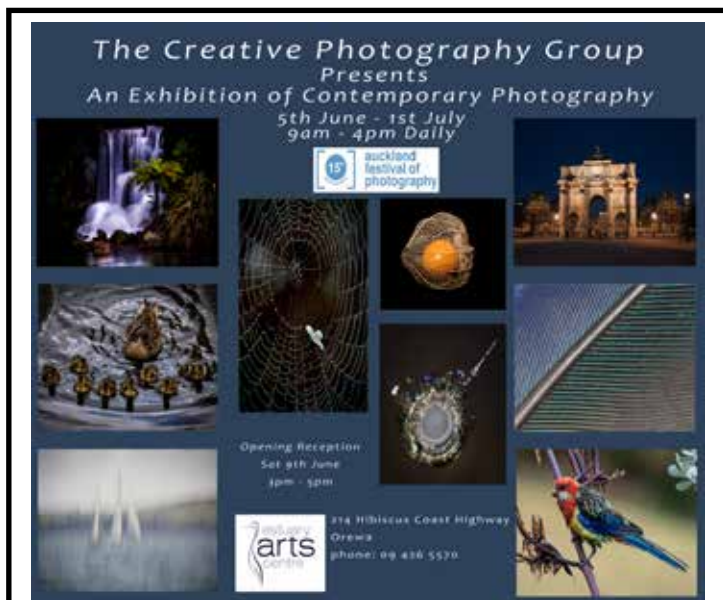
Ticket Sales:  
Hibiscus Hospice (09) 421 9180 or book online at  
[www.hibiscushospice.org.nz](http://www.hibiscushospice.org.nz)

Public Exhibition Dates:  
Entry with a gold coin donation  
Fri 1st - Sun 3rd June, 9am - 4pm  
Monday 4th June 9am - 2pm

hibiscus hospice  
Living Every Woman

A Hibiscus Hospice  
Fundraising Project

Supported by  




The Creative Photography Group  
Presents  
An Exhibition of Contemporary Photography  
5th June - 1st July  
9am - 4pm Daily





Opening Reception  
Sat 9th June  
3pm - 5pm

 214 Hibiscus Coast Highway  
Orewa  
Phone: 09 426 5570

The Creative Photography group have put together a series of hands on programmes  
All about Photography:

A great opportunity to learn more about photography and get the best out of your own photographic pursuits:

- **Sat 16 June 1pm:** Guided walk around the June Creative Photography exhibition **FREE**
- **Sun 17 June 10am - 12pm:** Using your cellphone camera presented by Sue Riach APSNZ **\$10**
- **Sun 17 June 1pm to 3pm:** Buying Your First Digital Camera presented by Lloyd Jenkins LPSNZ **\$10**

Booking Essential

Phone 09 4265570 or email [admin@estuaryarts.org](mailto:admin@estuaryarts.org)

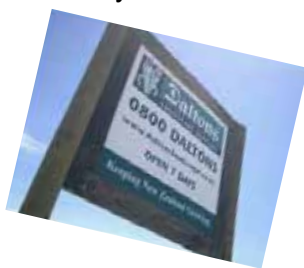
## From the Manager

Everyone including me is staggered by the pace in which 2018 has sped by. We are now in Winter and six months into the year. I have started to take expressions of interest from artists and groups for the 2019 exhibition calendar. Please let me know very soon if you would like to exhibit as our 5 gallery spaces will fill up fast.

Later this month you will see some staffing changes occurring here at EAC. Last month we advertised for a new part-time Customer Service position that has become available. Kris our dedicated administrator who has been here for 7 years fulltime will now become a part-time accounts administrator moving to two-days a week. I would like to introduce you to our newly appointed Customer Service staff member Pam Atkinson. Pam is an artist who has exhibited here at Estuary Arts on a number of occasions, she has also been a volunteer assisting with gallery installation and maintenance work, so she will have met many of you already. The team is really looking forward to working with Pam, do pop in and meet her as she will, together with the volunteer on duty, become the primary first contact face that you will be greeted with at EAC.

The **Mosaic Street Seat** has now been installed in its new position outside studio 1 overlooking the gentle ebb and flow of the Estuary. I would like to thank Mike Reidy and his team from **Mike Reidy Builders LTD** for moving and installing the seat for us. Boy was it heavy. Thank you to **Dalton Hilltop landscape supplies** for providing us with the new bark to spruce up the garden. Local business is amazingly supportive and I am every grateful for their generosity and eagerness to assist us where they can.

See you in the Centre  
Kim Boyd



Above: Mike Reidy and his team  
Left: Vicki Lambert



## Welcome Pam Atkinson to the Team

### Customer Service administrator

I want to thank everyone at Estuary Arts for the warm welcome I have received since hearing I have successfully attained the role of Customer Service Assistant. I am really looking forward to getting stuck into projects and helping the team develop further their goal of making Estuary Arts a top 'Go To' location on the Hibiscus Coast. With the community expanding at such a rapid rate and Orewa becoming an even bigger destination for tourists I welcome the opportunity to be part of the exciting developments this will create for our wonderful gallery and education facility.

Historically my background has been mainly in customer service, sales and administration, however over the last two years I have been a full-time artist focusing mainly on painting landscapes and portraits in acrylic and oils. I have completed commissioned works which are currently held in private collections in NZ. I also have a passion and interest in blown glass and sculpting which I would love to delve into further when time allows.

My other main interests are gardening, road trips, travel, horticulture (self-sufficiency is high on my agenda for a future lifestyle) and photography. Several years ago, I published a photographic/motivational book with Penguin Books. Another big passion is building garden art, furniture and gazebo's etc. Garden design and landscaping is just a little bit more than an obsession.

I am married with one adult child and my husband. As well as working in the publishing industry as Secretary to the NZ Military Historical Society so we spend a lot of volunteer hours at meetings and events connected to this. I am pretty handy with a hammer and a paint brush having worked as a builder's apprentice, so I can imagine there will be more than a few jobs I will be able to put some elbow grease into in my new role.

I am very much looking forward to meeting you all as you venture down to see us at the gallery and café and hope that if you see me you will wave out and introduce yourself. I look forward to seeing you at the centre soon.

Regards Pam



JUNE is photography month  
Take a snapshot of yourself on the seat, post it on our Facebook page and go into the drawer to win a \$50 Education voucher

# Upcoming Adults workshops



## VCW4: Jeli Print with Val Cuthbert

**Date:** Saturday 9 June

**Time:** 9.30am to 11:30am

**Duration:** 2 hours

**Price:** Non-member \$55 **EAC Member:** \$40

Make Geli Prints into a patchwork design.

Make Geli prints into a patchwork design. You will print several images using a geli plate, paint and a roller. These will be cut into triangles and shared with the rest of the class to compose individual triangle designs mounted on foam board to take home.

All materials are provided.

## JHW1: Malcolm Harrison Tribute Workshops with Joan Hamilton

**Time:** 11am – 2pm

**Session 1:** Sunday 10 June

**Session 3:** Sunday 19 August

**Session 5:** Sunday 16 September

**FREE**

**Session 2:** Sunday 08 July

**Session 4:** Sunday 26 August

Learn basic embroidery and applique stitching techniques inspired by Malcolm Harrison (pictured right). This community quilt will feature the history of the Western Reserve and how Estuary Arts re-purposed the old KFC building into what it is today. This legacy community artwork will be displayed in the cafe area permanently. All materials will be provided and the historical material from which to work from. Feel free to bring any material or old area photos with you to work from. You will need to bring your own basic sewing kit. Come to one or all of the sessions.



## PSW2: Pastel Painting with Pauline Smith

**Date:** Saturday 16 June 2018

**Duration:** 5 hours/ 1 day

**Price:** \$65

**Time:** 10am – 3pm

**Level:** Adult - All levels

**EAC Member:** \$50

Suitable for beginners or those with some experience this workshop will assist students to plan a painting, select appropriate materials, and the steps required to construct a delightful painting in pastels. An understanding of the application of layering pastels will be achieved, and skills in creating lights and darks on the painting. Materials extra.

## VICW1: Applique Techniques with Victoria Chin

**Date:** Saturday 18 August 2018

**Duration:** 5 hours/ 1 day

**Price:** \$65

**Time:** 10am – 3pm

**Level:** Adult - All levels

**EAC Member:** \$50

Learn the basics of Applique with Victoria Chin who is a skilled needle worker with vast experience in all facets of applique.

Materials: bring your own threads, needles and calico or pay \$10 to the tutor for a material pack.





## KBW1: The art of Underglaze with Kim Boyd

**Date:** Sunday 17 June

**Time:** 10am to 2pm

**Duration:** 4 hours

**Level:** Adult - All levels

**Price:** \$55 **EAC Member:** \$50

How to get the best out of underglaze. Learn how to decorate with underglaze using various techniques such as blocking, painting, stenciling and scraffito to make four ceramic coasters. All materials included.

What is underglaze?

Underglaze is a method of decorating bisque-ware ceramics in which the decoration is applied to the surface before it is glazed.

## GWW2: Chinese Painting workshop - Fruit and Vegetables with Ginette Wang

**Date:** Saturday 23 June 2018

**Time:** 10am – 3pm

**Duration:** 5 hours / 1 day

**Level:** Adult - All levels

**Price:** \$115

**EAC Member:** \$95

Ginette will demonstrate and guide you step by step to paint fruit and vegetables with Chinese ink and watercolour. This workshop is great for people who have taken Ginette's Chinese painting workshop in 2017/2018 or have absolutely no experience but with great interest to learn how to paint with this fun and exciting medium.

Materials extra (For return students, please bring your own material according to the list. For new students, Ginette can prepare the material needed for you that day at \$20 to be paid at the commencing of the workshop.)



## SMW2: Advanced Encaustic Hot Wax with Sue MacDougall

**Date:** Saturday 7 July 2018

**Time:** 10am – 3pm

**Duration:** 5 hours / 1 day

**Price:** \$125 **EAC Member:** \$120

This workshop would involve the natural follow on from the beginner's workshop where we use mixture of Encaustic wax with a quick refresher of the fundamentals then leading into a step by step to advanced techniques with each demonstration from Sue after which students would have the chance to work on these techniques on 4 different boards with Sue help. In the afternoon students will transfer what they have learnt onto another board using the technic from the boards to have one finished artwork.

Students will have the choice to pick a finished prepared board (Gesso) @ \$30 or use the same as the sample which is plywood painted for free.

The techniques are:

Image transfers

Scraffito - Effects

Layering & Scraping

Dripping & Scattering

Using Oil Paints as rubbing

Burning Shellac

Burning Indian Inks

The advance workshop would be for anyone who knows and has started using Encaustic. Beginners are also welcome but may do slightly different work.



## CMW1: Learn to Paint workshop with Catherine Mitchell

**Date:** Saturday 20 and Sunday 21 October 2018

**Time:** 10am – 3pm (both days)

**Duration:** 11 hours / 2 days

**Level:** Adult - Beginners

**Price:** \$140 **EAC Member:** \$120

Learn about colour mixing, tone, composition and acrylic painting techniques. As a beginner painter you will gain knowledge and confidence. You will complete 3 small projects.

Materials: Kit can be bought from the tutor at \$50 each or students could use the tutors materials for a charge of \$15 - \$20



# Notices

**Estuary Arts Annual Members Awards**  
06 July to 06 August 2018

Image: 2017 Winner Patricia Hallis

**Award evening 06 July 6-8pm**  
\$1000 Cash Premier Award and merit awards

artnews, EDMOND, GARDNER, ArtZone, CCG, Takarila, Picture Framing

Estuary Arts Centre  
214b Hibiscus Coast Highway | Orewa | (09) 426 5570 | www.estuaryarts.org

estuary arts centre

02 - 26 Nov 2018

**HIBISCUS & BAYS ART AWARDS**

**Call for Entry**  
\$3000 Premier Award and Merit Awards  
Estuary Arts Centre, Orewa  
www.estuaryarts.org

Hibiscus and Bays Local Board, creative nz COMMUNITIES, estuary arts centre

**Estuary Arts Charitable Trust Annual General Meeting**

**Tuesday 25 September 2018**  
7pm  
Studio 1

**All Welcome**

**WE WANT YOU!!!**

**Membership subs for 2018/19 now due**

Family \$45 Single \$35 Gold card / student \$25

Contact a Staff or Trust Board member during office hours only:

Mon to Fri, 9am - 4pm only Please note Weekends are manned by volunteers only

Manager (Kim Boyd): [manager@estuaryarts.org](mailto:manager@estuaryarts.org)

Accounts (Kris Poole and): [admin@estuaryarts.org](mailto:admin@estuaryarts.org)

Education (Leigh Freeman): [learn@estuaryarts.org](mailto:learn@estuaryarts.org)

Customer Service (Pam Atkinson): [admin@estuaryarts.org](mailto:admin@estuaryarts.org)

• Phone: 09 426 5570 021 172 4113 (Text Kim)

• Find us on Facebook

• Visit our website [www.estuaryarts.org](http://www.estuaryarts.org)

• Post a letter to PO Box 480, Orewa, 0974

With grateful support from:

