



estuary arts centre

214b Hibiscus Coast Highway, PO Box 480, Orewa | 09 4265570 | www.estuaryarts.org

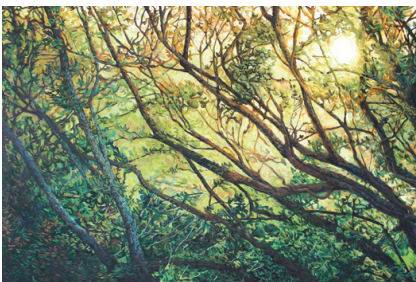


"Nostalgia"

08 February to 12 March 2017

A group exhibition featuring local artists Pam Atkinson, Carolyn Annand, Elizabeth Bolland and more, whose work reflects those nostalgic summer memories of a time gone by.

(Image: Batch by Elizabeth Bolland)



Arwen Flowers

08 February to 12 March 2017

An exhibition of new paintings in oils and acrylics inspired by the environment out West from Bethells, Muriwai to Piha.



Painting by Robin Midgley

17 February to 12 March 2017

Super realist Robin's paintings of local scenes are breath-taking to view. Meet Robin and watch him working live during the Arts Trail on March 11 and 12.



Fine Art Photography by Wayne Frost

15 February to 19 March 2017

"Photography has always been my passion; I am always on a quest to capture mother nature at her most pristine and sometimes volatile conditions. I feel privileged to share my creations and experiences with you".



Student Showcase

13 March to 2 April 2017

A selection of past and present students who have studied at EAC.

Entries now available at reception and on our website

February Exhibition openings

Saturday 18 February from 3 to 5pm

All Welcome

Free Entry

Come along and meet the artists in person

IN THIS ISSUE:

- February Exhibitions
- Orewa Boulevard Arts Fiesta 11 Feb
- News from the Chair: John Davies
- From the Manager
- Soap it up
- The Education Front: Sarita Taylor
- Life Drawing Taster class
- Hibiscus Art Studio Trail 11 and 12 March
- Weekend workshops
- Opportunities for artists
- Public Holiday opening times: 9am to 3pm

Orewa Boulevard Arts Fiesta



**Sat Feb 11th, 2017
1pm to 6pm - Orewa Boulevard**

SHUTTLE SERVICE –Thanks to Evelyn Page Village
Departs Victor Eaves Park / Sharks Sports Hall half
hourly from 11am. Gold coin donation p.p *

- ★ Interactive art & craft area ★
- ★ Two stages of entertainment ★
- ★ 100+ market stalls ★ Art market ★
- ★ Kids amusements & entertainment ★
- ★ Food trucks ★ Boutique beer garden ★

Thank you to our sponsors:

Destination Orewa Beach ~ Hibiscus & Bays Local Board
Fulton Hogan ~ Hibiscus Coast Community Arts Council
Pelorus Trust ~ Creative NZ ~ Deep Creek Brewing Co
Evelyn Page Village

(*gold coin donations go to the Heart Foundation)

Orewa Boulevard Arts Fiesta

11 February 2017, 1 to 6pm

Artist stalls

**Location: Orewa Square - opposite
the Community Hall**

Cost per stall: \$50 for a 3m x 3m

Stalls will be located in Orewa Square, along
with art activities and art related market stalls.
The cost is \$50 for a 3m x 3m stall.

For the price of larger stalls, please contact Pat
Shanks ph 09 426 4736 or email rpshanks@xtra.co.nz. Payments can be made directly to **Hibiscus Coast Community Arts Council Inc,**
ASB 12 3084 0192823 00,
including your name and (in reference) art stall,
or by posting your details and a cheque made
out to Hibiscus Coast Community Arts Council
Inc to PO Box 424, Orewa 0946. Receipts will be
issued on the day. Please note that this event
is run by the HCCAC, all payments go through
them.

News from the Chair

Well good day and Happy New Year. I had a very enjoyable Christmas Break. I shut down facebook and went in to a vegetable state for about 2 weeks to recharge. My retail work was at a peak in the days leading up to Christmas Eve, we were quite busy on the Trust here at EACT leading up to Christmas, and my mind and body were in need of a break.

*Our first Trust meeting for 2017
is early February and we'll set an
agenda for the new year and review
the progress I know is happening
behind the scenes on a new interactive
website that will allow you to see each
of our classes online and book and pay
for them right there and then without
needing to visit us.*

Real progress! And there's more going on to streamline the systems behind the scenes to keep us as lean as we can be to keep ongoing cost structures as low as possible. One never knows when finances will be constricted in the world of not for profits like us.

Mentioning courses reminds me also that sadly we said goodbye to Sarita Taylor during January. Sarita has been instrumental in creating our greatly expanded education and holiday programme offerings. She is moving to the Hawke's Bay where her husband, a senior police officer, has been transferred to. We wish her well and were sad to find she was leaving.

The Cash and Carry art sale that started in December was a huge success during the gift buying season, and from my last visit a few days ago, I can assure you there's still some fabulous art on the walls for you to buy till February 5 when the Gallery does its all change routine and we get an exciting new "event" to enjoy. Go take a look at the February lineup at <http://www.estuaryarts.org/upcoming.html>. Paintings inspired by the nature of the West, Nostalgic views of summer and a fine art photography exhibit.

Estuary Arts Centre is an amazing place. Enjoy!

John Davies

REFLECTIONS

with Kim Boyd

Welcome back everyone to 2017.

I hope this newsletter finds you all energised and invigorated after a well deserved break.

My family and I took some extended leave and travelled around the Yasawa Island group in Fiji, it was hot, sticky, colourful and invigorating and I would like to thank Kris, Sarita and our dedicated group of volunteers for taking charge of the reins so professionally.



We have another big year lined up for you, lots of new and exciting weekend workshops (see details on page 5 and 6), the April School Holiday programme all planned and ready for enrolments and term 1 and 2 classes set.

We sadly say 'au revoir' to Sarita who was with us for 6 months and wish her and her family a stressfree relocation to the sunny Hawkes Bay. It seems we have been saying farewell to many of our long standing members and artists who are relocating to the provinces but in turn we welcome all the new families to our area as we witness the significant growth of Millwater, Wainui, Red Beach and surrounds.

There are still a lot of opportunities for you as artists to take advantage of (see the back page for more details) but I do encourage all of our art students to take part in our first ever Student Showcase exhibition in mid March. Entry forms are now available at Reception and on our website.

As you will have read in our December newsletter we have new Cafe owners at Driftwood and if you have not had the chance to meet Sunita, please make yourself known to her. The Cafe continues to operate as normal with one change to take note of:

Public Holiday operating times: 9am to 3pm

As John mentioned in his column we are working with Unleashing Potential on a brand-new website, we hope to launch this new website to coincide with our 10th anniversary in March. There will be further details about our planned celebratory open day in our next newsletter.

I hope to see all of you at our next exhibition opening on Saturday 18th February between 3 and 5pm.



Pics of our fabulous volunteers out for the end of year Christmas function at the Puhoi Pub.

Soap it Up !!!



creative
COMMUNITIES *nz*

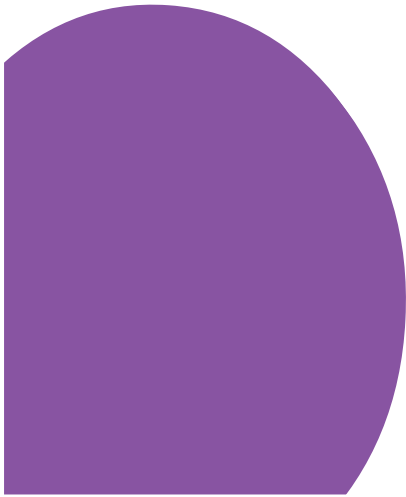
with our community partners



**Brings you... EPISODE THREE
OF OUR TEENAGE SOAP OPERA!
'BREAKWATER HIGH'
A 'POP UP' THEATRE EXPERIENCE
*'expect the unexpected !!!'***

**WE ARE PERFORMING LIVE AT :
ESTUARY ARTS CENTRE**

**214B Hibiscus Coast Highway
SATURDAY 28TH JANUARY
TWO SHOWS 12.30pm, 1.30pm
KOHA APPRECIATED!
*Check out episode 1 now on fb***



Upcoming Workshops



Saturday 18 February with Storm McCracken

SMW1: Introduction to Chain Maille Jewellery

Time: 10am-3pm

Price: \$70 EAC Member \$60

Min: 6

Max: 10

Duration: 5 Hours/ 1 day

Level: Adults, complete beginners

Would you like to make your own chain Maille jewellery? Come to this hands on workshop with Storm McCracken and learn to use pliers to open and close jump rings to weave various patterns. Storm will give explanations of different metals, jump rings, tools and basic weaves and you will walk away with a new bracelet- and the skills to make more! Materials included.

CCW1/2/3: Italian for Travellers Workshop Series with Cristina Capri

Workshop Dates: "When in Rome"
"When in Southern Italy"
"When in Northern Italy"

Saturday 11 February

Saturday 11 March

Saturday 8 April

Time: 10am-3pm

Duration: 5 hours/ 1,2 or 3 days

Min: 6

Max: 10

Price: \$70 per class, or \$200 for the series*

EAC Member: \$60 per class or \$165 for the series*

Level: Adults, teens, beginners, intermediate



Are you travelling to Italy this year? Come along to one, two or all this workshop series with experienced tutor and Italian expert Cristina Capri to learn the local languages, cultural norms, art history, food and shopping of Rome, Southern Italy and Northern Italy.

*Receive a 10% discount on Ginette Wang's Travel Diary (Ink Pen and Watercolour Wash) class when you book in to all three of the Italian for Travellers Workshop Series. See Thursday classes for more information.



PSW1: Beginners Learn to Draw Workshop Series with Pauline Smith

Workshop Dates: Day 1 Saturday 25 February

Day 2 Saturday 25 March

Time: 10am-3pm

Duration: 5 Hours/ 2 days

Price: \$140

EAC Member: \$120

Min: 6

Max: 10

Level: Adults, complete beginners

This Beginners Learn to Draw Workshop Series (2 days) is for people who want to draw realistically and confidently. The 2 day workshop will develop your skills in perception of edges, shapes, light and dark, relationships and negative space. Each student will learn 'how to see' accurately, gaining essential drawing skills, and walk away with newfound confidence in their drawing abilities. A materials list will be sent on confirmation.



GWW1: Watercolour with Ginette Wang Seascapes

Workshop Date: Saturday 11 March

Time: 10am-3pm

Duration: 5 hours/ 1 day

Price: \$105

EAC Member: \$95

Level: Adults - Beginners & intermediate

Min: 6

Max: 10

Through Ginette's systematic and encouraging teaching process, you will learn the fun and excitement of watercolours. Our award-winning artist tutor Ginette will provide step by step guidance as you work through basic essential watercolour knowledge, brush techniques, tone, colour and composition. By the end of this workshop you will learn how to apply these techniques to your own painting. Please note that materials are extra and a materials list will be sent on confirmation.

GWW2: Chinese watercolour & ink - Flowers (Level 1) with Ginette Wan

Workshop dates: Saturday and Sunday 25 & 26 March

Time: 10am-3pm (both days)

Duration: 5 hours/ 2 days

Price: \$200

EAC Member: \$180

Level: Adult - Beginners & intermediates

Min: 6

Max: 10

This weekend workshop is designed by Ginette for people interested in Chinese watercolour and have no or very little experience with the media and would like to enjoy painting flowers with this fun and exciting medium. You will be introduced to the history, basic concepts, techniques, different types of paper and brush through this 2 day flower painting workshop. Most materials included. An accessories materials list will be sent on confirmation. Further Level one workshops will be offered throughout the Year in the traditional Chinese watercolour genre's of birds, landscapes and animals. In 2018 a Level 2 course will be introduced for students who have completed Level 1. An extra \$40 materials fee is payable directly to the tutor at the commencement of the workshop.



HMW1: Fun with Mono Prints with Heather Matthews

Dates: Saturday 27 and Sunday 28 May

Time: 10am-3pm

Duration: 5 hours/ 2 days

Price: \$150 EAC Member \$130

Min: 6

Max: 12

Level: Adults- Beginner- Intermediate

"Fun with mono prints". Using acrylic paints and perspex as a printing block and various acrylic paints we will create art works which can then be used in many ways as gifts or personal, decorative items. Please note that materials are extra and a materials list will be sent on confirmation.



LHWS: Doing It Differently with Lindsay Hey

Dates: Sat 6 May/ Sat 10 June/ Sat 1 July/ Sat August 5

Time: 10am-3pm

Duration: 5 hours/ 4 days

Price: \$75 per day or \$250 for series EAC Member \$60 per day or \$220 for series

Min: 6 **Max:** 12

Level: Adults- Beginner- Intermediate

This set of four workshops follows the 2016 series of "Towards Abstraction". The students will be guided through the application of paint on a variety of surfaces, using an array of implements and techniques. Be prepared for some outstanding outcomes as you venture into the unusual and unknown. Please note that materials are extra and a materials list will be sent on confirmation.

Print Workshop with William Barnhart

Date: 4/5 the March

10am – 3pm each day Max 8 participants

Costs \$120 basic fee, plus \$30 optional for lunch to be supplied each day.

There will be a small materials fee payable on the first day.

This workshop, run by award winning American printmaker and painter William Barnhart, will take participants in unique directions through a variety of new and exciting exercises and experiments from which they will create their drypoint printing plates. Through different wiping techniques and the more spontaneous use of the chine colle process William will challenge participants to produce some different and dramatic results. This will be stirring and exhilarating experience for those who participate.

Materials for participants to supply:

drawing paper, pencils, own printmaking paper (at least 250gm – some will be supplied), scissors, sharp knife and blade, paste – wheat or rice or equivalent (some will be supplied), several brushes, 1 roll 1 cm masking tape any chine colle papers – preferably Japanese rice papers

Materials supplied in the workshop:

plexiglass sheets
files
wooden dowel
spray adhesive
black etching ink, brayers, tarleton
a selection of chine colle papers

To book please email Val Cuthbert
valeriecuthbert@xtra.co.nz



JTWS: Pinhole Photography with Jenny Tomlin

Dates: Sat 4 and Sun 5 March

Time: 10am-3pm

Duration: 5 hours/ 2 days

Price: \$185 EAC Member \$165

Min: 6 **Max:** 10

Age Group: Adults- Beginner- Intermediate

This is a practical hands-on workshop exploring the surreal world of pinhole photography. Make your own pinhole camera from recycled materials, help convert a room into a working darkroom and develop your exposed photographic paper negatives. Learn about what these cameras do well, watch your images appear in the darkroom. After scanning, the images are processed into digital positives. Materials included. Please bring a USB device.

Opportunities for Artists:

Student Showcase 2017

13 March to 2 April 2017

This exhibition is open to all past, present and term 1 students of EACT. Costs \$15 per student for up to 3 artworks (an artwork can be a series of ceramics or jewellery pieces) Delivery of artwork no later than 12 March. No late entries will be accepted

'Brushed Words' - Artwork inspired by Poetry

12 June to 2 July 2017

Artists who work in any medium are invited to select a poem from the list of poetry and to create an artwork inspired by this piece of writing. The completed artworks will then go into a group exhibition in the main gallery of Estuary Arts Centre displayed together with the poem for the viewer to engage in. The list of poems is available on our website www.estuaryarts.org under "Opportunities for artists"

Puppetry and the Art of Illusion Festival 2017

03 to 30 July 2017

During the two-week Festival of Puppetry and the Art of Illusion from 10 to 23 July 2017 there will be opportunities:

1. To exhibit your Performing objects in the static exhibition from 3 July to 30 July 2017
2. To teach / run one or a series of workshops between 10 and 22 July.
3. To perform during the Festival weekend of Sat 22 and Sun 23 July (this will be a great opportunity for the students to show off and perform their puppets)
4. To be a speaker on a subject around Puppet Theatre, the history of puppetry through the ages or a topic of your choosing.

All tutors / speakers will be remunerated for their time. email manager@estuaryarts.org

'EACT Annual Members Award Exhibition' -

01 August to 03 September

Entry forms available on request email manager@estuaryarts.org

'Keeping Abreast' - A group exhibition encouraging artists to reflect on Breast Cancer Awareness

25 September to 29 October

Entry forms available on request, email manager@estuaryarts.org

ART N TARTAN
WEARABLE ART AWARDS 2017
*** EXPRESSIONS OF INTEREST MEETING ***

Would you like to be part of this prestigious event being held in the Waipu Celtic Barn in July?

If so, the Waipu Museum is holding an


EXPRESSIONS OF INTEREST MEETING...
2nd FEBRUARY @ 7.00pm
at the WAIPU CELTIC BARN

Entrants, helpers, models,
dressing room staff, stage extras,

Come along, enjoy some nibbles, a drink and a chat.
Meet the new Artistic Director, hear all about the
format for this year and another great prize pool.

ALL WELCOME!

WAIPU CELTIC BARN - The Centre Waipu - 7.00pm - 2nd February 2017



Contact a Staff or Trust Board member during office hours only:
Monday to Friday, 9am - 4pm only

Please note Weekends are manned by volunteers only

- Manager: manager@estuaryarts.org
- Admin: admin@estuaryarts.org
- Education: learn@estuaryarts.org
- Phone: 09 426 5570
- 021 172 4113 (Text Kim)
- Post a letter to PO Box 480, Orewa