



Cash & Carry under \$500 Art Sale

Runs until 29 Jan 2018

Paintings, prints, ceramics, jewellery, sculpture, textiles, glass, mosaics and more



Kids Summer School Holiday Programme

15 to 27 January 2018

Bookings essential, more details www.estuaryarts.org



VCW1: 3 Day Mixed Media Workshop with Val Cuthbert

Dates: Fri 19, Sat 20 and Sun 21 January 2018

Time: 10am – 3pm **Duration:** 15 hours/ 3 days

Level: Adult - All levels

Price: \$220 EAC Member: \$200

Create an original artwork using a variety of printmaking techniques and media. Bring along a drawing or photo to etch using relief and intaglio techniques onto your lino or drypoint plate. Finally enhance your artwork with overprinting, collage, chine colle and hand colouring techniques. Materials to the value of \$60 are included.



PSW1: Introduction to Pastels with Pauline Smith

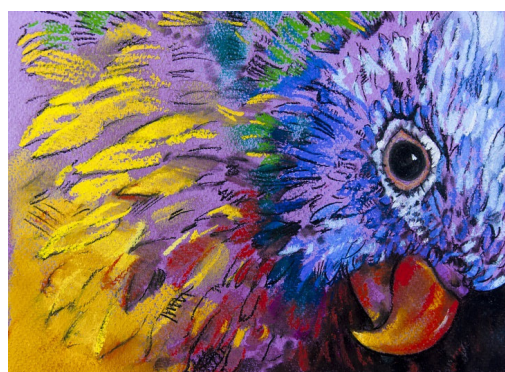
Date: Tuesday 30 January 2018

Time: 10am – 3pm **Duration:** 1 hours/ 1 day

Level: Adult - All levels

Price: \$65 EAC Member: \$50

Understand types of pastel, paper. Learn how to set up your work and layer pastel colours. This will suit people who want to work in pastels but need help to get started. *Materials extra.*



PSW2: Pastel Colour Workshop with Pauline Smith

Date: Monday 5 February 2018

Time: 10am – 3pm

Duration: 5 hours/ 1 day

Level: Adult - All levels

Price: \$65 EAC Member: \$50

Build up a good basic knowledge of colours and how they work together. Learn how to keep your colours clean, and create harmony in your paintings.

Materials extra.

News from the Chair

So back on the 23rd of November around 50 of Estuary's team headed off to Gibbs Farm on the Kaipara. It was a chance to celebrate the power of volunteers at Estuary for another year and to enjoy one of our, that is New Zealand's, real art miracles.

Estuary Arts Centre is totally driven by our volunteers. The Board are all volunteers and a veritable army of 70 or so volunteers assist our tens of thousands of visitors each year. Our Education co-ordinator Leigh Freeman started as a volunteer. We thank the stars for volunteers and their enthusiastic participation in the goals of the gallery. We are here to be the best little art gallery in Auckland and I think we deliver highly towards that expectation, which I rush to point out is my personal vision for us, not the official one! Nothing would be possible without the support of our volunteers. Their combined value to us is well in excess of \$100,000 just at minimum wage, and they're all worth more than that!

If you can spare a few hours for Estuary, we'd love you to join in. Our Volunteer Army is run by Kris Poole and you can reach out to her via her email admin@estuaryarts.org, or you can just give her a call on 09 4265570.

Anyway, the other part of what I wanted to write about this month was to express my praise of the Gibbs family, obviously in particular Alan Gibbs. Thank you from all of us at Estuary and as an extension from the people of Aotearoa/New Zealand. In particular thanks from the arts community for your incredible support both of the individual artists who power your farm, but also simply of the wider concept of philanthropic support of the arts. A visit to your farm, is special, and almost always involves raising money for the groups who get access. If you get the chance to see this amazing place, take it. You will not regret whatever your tiny investment is. Be sure to use the map to head off to the furthest away sculptures and then return, ensuring you miss nothing on your journey. If I do it again, I'd head south first and traverse the farm effectively in a clockwise direction...just saying!

Have a wonderful family Christmas. I'll be raising a glass or maybe a bottle to my best friend, lost this year to a horrible but thankfully quick disease...well quick in the sense that when the end came it was quick and relatively pain free. Whilst being with a dying person is traumatic, it is perhaps the most moving experience of my life to date, and gives me really new insights for the magical work our local Hospice does. I'm personally lifted up by the mutually win/win relationship we at Estuary have with the Hibiscus Hospice. Anyway, back to the delight of the season. Take every chance to see the twinkle in the eye of the innocent youngsters as Christmas enthralls and inspires them. That's the spirit of Christmas.

koa Kirihiomete
John Davies



Desperately seeking a part-time maintenance/ cleaner

We are so sad we have to say goodbye to our amazing cleaner Ray who is leaving the area. The Staff at EAC wish you all the very best with your move.

If this sounds like a job for you please contact the manager.

Job commences end January 2018

And another year “Bites the Dust”

I hear this all the time, “Where did the year go?” I always concur because each year seems to go faster than the one before. Is it because we are so busy rushing this way and that? I for one think its time to slow down a bit, and December and January brings just that. The Cash and Carry under \$500 art sale opens on Friday 01 December in conjunction with our first Art Market with live music by Stephen Thorne, nibbles and refreshments. You can enjoy over 400 artworks and over 28 art stalls. The Cash and Carry show runs throughout December and January which give us staff a welcomed relief to enjoy a bit of summer time off with the family. The Centre is open through the holidays, and here will always be at least one staff member to assist through this period.

I would like to say a special thanks to Kris and Leigh for their dedication and hard work behind the scenes and to our army of volunteers and Trust Board members. We could not operate without you, sincerest and heartfelt thanks. I must also acknowledge the massive support that we receive from our Hibiscus and Bays Local Board and Foundation North. We at Estuary Arts Centre wish all of you a very merry Christmas.

The Centre and Cafe will only be closed:

Sunday 24 Dec and Monday 25 December 2017

Sunday 31 Dec 2017 and Monday 01 January 2018

We have a fabulous line up of kids art classes and a few summer classes for adults too. See details further on.

I hope to see you all at the opening this Friday evening.

Kim Boyd

January School Holiday Programme



JBH1-1: Mixed Media with Jo Bain

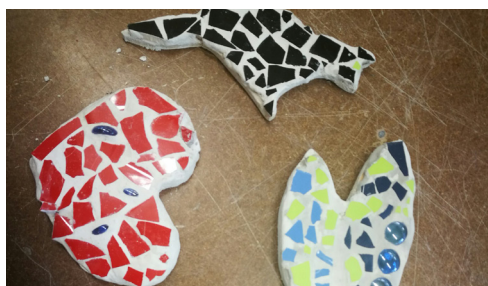
Monday 15 January 2018

Time: 10am - 3pm

Cost: \$22 Non member / \$20 EAC Member

Ability Group: Children, 5 years and older

A fun class where we will complete several paintings using different mediums. We will create a canvas with a textured surface and another piece using roller painting and sponges to create the background. Also available Black paper with metallic gold/copper/silver paint what subject you like with guidance from the tutor.



CHH1: Mosaic Madness with Corrine Henderson

Tuesday 16 January 2018

Time: 10am - 3pm

Cost: \$55 Non member / \$50 EAC Member

Ability Group: Children, 7 years and older

Students can design their own shape which the tutor will cut out for you in wood.

You then get to mosaic your shape with tiles, beads, buttons and more.

Bring a packed lunch, water and a snack.



MBH1-1: Beauty Makeup Tutorial with Meredyth Bailey

Tuesday 16 January 2018

Time: 9:45am - 12:15pm

Cost: \$25 Non member / \$22 EAC Member

Ability Group: Children, 9 years and older

Beauty is in the eye of the beholder, so make an impact with strong and bold eye makeup. Meredith will teach you about makeup products, foundation and eye make-up tricks and techniques.

January School Holiday Programme



MBH1-2: Severed Fingers with Meredyth Bailey

Tuesday 16 January 2018

Time: 1pm - 3pm

Cost: \$22 Non member / \$20 EAC Member

Ability Group: Children, 8 years and older

Come and learn how to make a special effects severed finger. Learn how to make a simple cast of your finger using latex, fill the cast with gelatin and use paint to bring it alive.



EBH1-2: Drawing and Painting with Eion Bryant

Wednesday 17 January 2018

Time: 10am - 3pm

Cost: \$55 Non member / \$50 EAC Member

Ability Group: Children, 7 years and older

With step-by-step demonstration, children will create a vibrant acrylic painting while learning tips and techniques along the way. Fun and focused.



SLH1-1: Seaside Modelling Magic with Sue Law

Thursday 18 January 2018

Time: 10am - 12:30pm

Cost: \$27 Non member / \$25 EAC Member

Ability Group: Children, 6 years and older

Form figures from coloured modelling wax based on fantasy sea life such as mermaids or mermen. These will be set into seashells on 'rocks' we make from air-drying clay.



JBH1-2 Arts and Crafts with Jo Bain

Monday 22 January 2018

Time: 10am - 12:30pm

Cost: \$22 Non member / \$20 EAC Member

Ability Group: Children, 5 years and older

A fun class making several projects, lots of materials to get creative with. We are making bubble prints, with under the sea creatures, natural collages with sand to create a picture and pastel and dye pictures.



JLH1: Fun with Mosaics and Jo Luker

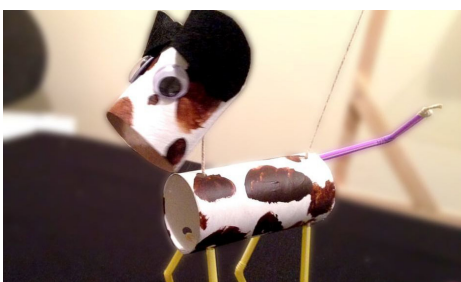
Tuesday 23 January 2018

Time: 10am - 3pm

Cost: \$55 Non member / \$50 EAC Member

Ability Group: Children, 7 years and older

With step-by-step demonstration children will create a vibrant and fun mosaic artwork using tiles and broken china.



RMH1-1: Puppy Puppets with Ricki Meaker

Tuesday 23 January 2018

Time: 9:45am - 12:15pm

Cost: \$22 Non member / \$20 EAC Member

Ability Group: Children, 5 - 7 years

From Waste to Works of art...create something out of nothing! Make a friend you can take home out of recycled materials and learn how much fun resourcefulness can be.



RMH1-2: Podgy Piggy Banks with Ricki Meaker

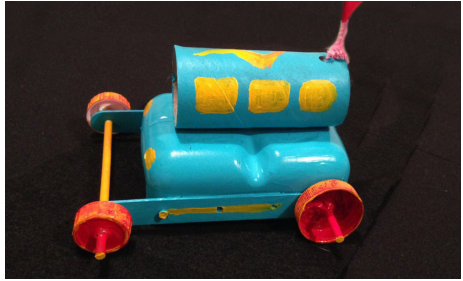
Tuesday 23 January 2018

Time: 1pm - 3:30pm

Cost: \$22 Non member / \$20 EAC Member

Ability Group: Children, 5 -7 years

Create a piggy bank out of recycled materials. This class will encourage children to think creatively to find new uses for materials that may have been otherwise thrown away.



RMH1-3: Rubber Band Racers with Ricki Meaker

Wednesday 24 January 2018

Time: 10am - 12:30pm

Cost: \$22 Non member / \$20 EAC Member

Ability Group: Children, 5 -7 years

Have fun these school holidays making your very own rubber band racer from recycled materials. Design, paint and construct your own racing car in this fun and friendly class.

SLH1-2: Modelling Magic with Sue Law

Thursday 25 January 2018

Time: 10am - 12:30pm

Cost: \$27 Non member / \$25 EAC Member

Ability Group: Children, 7 years and older

Form your own fantasy sea creatures from coloured wax, then set into shells and create your own clay environment for them to live in.



Contact a Staff or Trust Board member during office hours only:

Mon to Fri, 9am - 4pm only

Please note Weekends are manned by volunteers only

- Manager (Kim Boyd): manager@estuaryarts.org
- Admin / accounts (Kris Poole): admin@estuaryarts.org
- Education (Leigh Freeman): learn@estuaryarts.org
- Phone: 09 426 5570 021 172 4113 (Text Kim)
- Find us on Facebook
- Visit our website www.estuaryarts.org
- Post a letter to PO Box 480, Orewa, 0974

For complaints, suggestions, high-fives contact the Manager in writing or in person.

With grateful support from:



Hibiscus artists present gift-giving solutions

If you're scratching your head wondering what to buy that person on your Christmas shopping list "who has everything", it could be worth making a visit to the Art Markets at Estuary Arts in Orewa this month.

On sale will be a range of unique and one-of-a-kind gifts made by artists from the Hibiscus Coast.

Gallery manager Kim Boyd says the art market was first held last year.

"The aim was to encourage locals to shop local by supporting artists and it was very successful," she says. "As a result, we are putting on two markets this year."

The first will be held on Friday December 1, from 4pm to 8.30pm, and will coincide with the opening of the annual under \$500 Cash and Carry sale. There will be wine, nibbles and live music by local musician Stephen Thorne.

The second market will be on Sunday December 3, from 11am to 3.30pm.

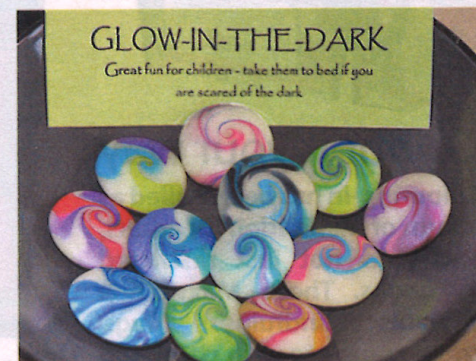
All items for sale will be handmade and will include silverstone jewellery, stained glass decorative items, chainmaille jewellery, ceramics, mosaics, Kiwiana, prints and vintage doilies, candles and soaps.

"And lots more," Kim says.

Award-winning polymer clay mosaic artist and designer, Clair Fairweather, of Millwater, will demonstrate her jewellery-making techniques during the weekend.

"My mother was an artist and I studied art at school in the UK," she says. "I started using polymer clay after moving to NZ, but I'm largely self-taught as it is a little known creative medium in NZ. In Europe and the US it is now considered a fine art medium."

Claire says the versatility of the polymer means it can be used to make everything from jewellery and small



Polymer mosaic artist and designer Claire Fairweather will demonstrate her jewellery-making techniques at Estuary Arts on the weekend of December 2 and 3.

accessories to models and miniatures, sculpture, paintings and mosaics. Many of the swirling patterns have a cultural feel to them.

"One of its real attractions is the way you can mix the colours to get just the shade you want; a bit like you do with paints."

Claire has collected a number of awards for her work including Best in Sculpture at the International Polymer Awards in 2014 and Jurors' Choice in Wearable Jewellery at the same awards this year.