

# Exhibitions 08 August to 02 September 2018

Opening function Sat 11 August 3pm - 5pm



**G**  
**1** gallery

## "Toss the Floss"

presents textile & embroidery work by

Joan Hamilton, Marie Wintle, Lesley Calder, Margaret Ried, Victoria Chin, Fiona Mendel, Deborah Peek, Kay White, Lorraine Allen, Raewyn Irwin, Pam Todd, Paula Apperley-Wyborn, Diane Toulmin



**G**  
**2** gallery

## "All Things Snow"

Ceramic sculpture by Keri Hannah

*My exhibition "All Things Snow" comes from my love of Mt Ruapehu and many hours spent there snowboarding.*



**G**  
**3** gallery

## "Viva South America "

Photography by Pauline Stockhausen

View Pauline's intrepid adventures around South America



**G**  
**4** gallery

## "Hibiscus Coast Printmakers"

Participating printmakers include:

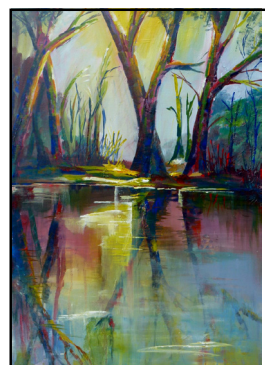
Christine den Hartogh, Nichola Holmes, Deborah Martin, Kim Ingram, Lianne Timlin, Val Cuthbert, Matt Turner and Bronwyn Smith



**G**  
**5** gallery

## "Malcolm Harrison Tribute Exhibition"

Malcolm was an outstanding textile artist whose work was collected by major New Zealand institutions and galleries and frequently commissioned for public spaces.  
On loan from the Waiheke Community Gallery



**S**  
**1** studio

## "STEP into SPRING"

Solo art exhibition by Shirley Smith

**One weekend Only**

Sat 11 and Sun 12 August 9am to 4pm

Opening function Fri 10 Aug, 7pm

In my abstract work, I enjoy layering paint to create texture and depth to the work. Colour and form are important to me.

## Chair's Report

It's a really exciting month for our Head Honcho Kim. She's secured a local chance to view the Malcolm Harrison Tribute exhibition. Harrison was a leading textile artist but I was also lucky enough to catch a sneak glimpse this week of some of his original drawings and some amazingly gentle and internally soothing work with tapa.

And from a national celebrity artist to a local celeb, Pauline Stockhausen is exhibiting her photographic art this month. Pauline's well known for her social media advice around the Coast and further afield, but slightly lesser known is her considerable eye for a photo. Come in during August for a look-see.

There are five exhibitions opening this Saturday the 11th in a combined function from 3-5pm. Unfortunately I shall be at a job I agreed to a couple of months ago, but I'll see the whole show on a return visit. I'm often here!

The once a year treat that is the Trust's AGM is just around the corner. This year, as well as signing off on all the good things Kim and the team have achieved and the annual accounts (in good shape) we have an absolutely fascinating presentation for you. The Millwater Gallery team will be here to talk about their amazing concept for an Orewa sculpture walkway. This would be incorporated in to the Estuary walk, Te Ara Tahuna Estuary Cycleway and Walkway, if approved and finances obtained. Come and see and hear about the amazing vision the team have developed. It'll be a brilliant area attraction if it's pulled off, and as we'll be at one end of it, we're probably a great candidate to be supporting the initiative. Let's hear all about it and then you, the members, can tell us how you feel about it.

In my day job, I'm a keen participant in the performance arts. This month, The Rose Centre in Belmont where I work is hosting Company Theatre's Anne Rimmer directed rendition of "The Importance of Being Earnest". Anne tells me the rehearsals and show are beautifully on track and I shall see for myself at this Friday night's gala opening. If you're keen to travel down the road, you can grab tickets at [iticket.co.nz](http://iticket.co.nz). On Saturday morning before I do that piece of work that stops me being at our next opening, I'll be in town at the EV show hopefully driving a couple of electric cars. I'm a big fan after getting in to a hybrid myself and finding the savings pay for the HP, so thank you for my new car gas companies of Aotearoa!

Cheers  
John Davies



Tut Blumental - winner of the People's Choice award sponsored by Orewa Picture Framing Studio

## Pop-up Exhibition by Shirley Smith "Step into Spring"

Opening function Friday 10 Aug, 7pm

Sat 11 & Sun 12 Aug 9am to 4pm



Born in Hastings, New Zealand, I have had a love for art from an early age. I have always sensed an interest in nature and expressing this in some form of art. I began painting in oils seriously at the age of 30, attending community art classes as an adult and completed a University Entrance qualification in art. In the 1990's I enjoyed working with clay over a ten year period, exploring form and texture that can be created with clay.

However, my love of painting has led me to concentrate on this in recent years. I enjoy working with acrylics on abstracts and sometimes use mixed media. In my abstract work, I enjoy layering paint to create texture and depth to the work. Colour and form are important to me. More detail will be seen as you spend time viewing each painting. Within the forms of plants, trees, sky and sea are the same patterns repeated naturally, and this is what I am passionate about expressing. I marvel at the amazing world we live in.

I've spent many years of my adult life as a child health nurse where, every day I've cared for women who mainly have had successful deliveries for their infants. We in New Zealand take successful deliveries for granted but this is not the case for many women in developing countries. When I became aware of the plight of the African women, many whom lose their babies and themselves suffer internal damage, I wanted to help and I found out that Mercy Ships provides a wonderful service taking hospital ships to the world's forgotten poor, bringing hope, healing and healthcare. So I'm pleased to be able to give a percentage of the profits from the sale of my art to Mercy Ships.

Information at:  
<http://mercyships.org.nz/>

I have recently been involved with providing art therapy to early dementia sufferers at a day care unit in Auckland.

For many years, I have been a member of the Mairangi Art Centre, in the East Coast Bays of Auckland and I exhibit there on a regular basis.

Shirley Smith

## The Annual Members Awards - winning artists:

- Premier Winner: "Still Life" by Val Enger. \$1000 cash prize, 1 year NZ Artist Magazine Subscription and a 90 minute massage therapy from Riverstone.

## Merit winners:

- CCG Industries Merit Award: "Cocktail" by Dulcie Draper
- Factory Frames Merit Award: "Ines" by Kim Ingram
- Emma Jean Framing Merit Award: "Boat sheds" by Keith Galvin
- The French Art Shop Merit Award: "Big sky" by Dean Miller
- Gordon Harris Merit Award: "Contemplation" by Michael Irwin
- Takapuna Art Supplies Merit Award: "A Thousand Years from Now" by Tut Blumental
- Art News Merit Award: Marilyn Wheeler
- Artnews Student Award: "Garden Tui" by Melissa Bell
- Orewa Picture Framing Studio People's Choice Award: "A Thousand Years from Now" by Tut Blumental (pictured left)

## From the Manager

The Members Merit Awards opening function held on Friday 06 July was a fantastic occasion, well attended with great prize packs from our generous sponsors details of winners are on page 2. We are very grateful for their assistance. We have tallied your votes the **People's Choice** award sponsored by Orewa Framing Studio and congratulations go to Tut Blumental. In a close second came Michelle Wright followed in third favourite place by both Catherine Hobson and Gail Smith. Thanks for voting everyone.

Back from diving the warm depths of the Pacific ocean on some truly amazing historic wrecks which now seem a distant memory. My favourite was the HMNZS Moa which was responsible for battering a Japanese submarine which later sank. We dived both of these wrecks and as they are relatively deep the eerie blue envelopes you with a sense of history, struggle and sadness. I hope to be able to share some of my underwater photography in an exhibition to honour Anzac day next year.



From one traveller to another, Pauline Stockhausen's video and photos of her Viva South America expedition are amazing and make you want to grab that backpack and head for Peru.

August is a busy month in the gallery with six exhibitions. Textile, stitch and colour are evident in the bold designs of "Toss the Floss" group echoed in the Malcolm Harrison Tribute Exhibition in Gallery 5 upstairs. With the cold months of winter these two shows warm the bones with their colour, pattern and vibrancy.

Keri Hannah who has been a ceramic student for a number of years here at EAC has "felt the fear and done it anyway" putting her figurative sculptural pieces on display. I have to commend Keri as it is always really hard to launch your artwork for the first time and it can be terrifying. But you did it and your exhibition looks sensational.

Lastly gallery five in the foyer features a diverse range of printmaking techniques and application. I have to mention the organic botanical prints on cotton by Christine den Hartogh, I think this

method of printing is worthy of a workshop.

While I was away Leigh and the team managed a highly successful and energetic July School Holiday Programme. All classes ran with 90% full catering to over 200 children. I saw the photos of the outcomes and was blown away by the amazing works of art created. Thank you Leigh for the great job done and to all of the passionate



tutors who deliver these creative, engaging programmes.

We have now begun term 3 with most classes commencing in the first week of August. If you missed out on a class, do keep in mind the weekend workshops which are always being updated. There is a great 4 day intro to Oils coming up.

There are plenty of opportunities for artists as well. Entries are still open for the New Zealand National Mosaic Exhibition being held in September here at EAC. Entries are also open for the Hibiscus and Bays Art Awards in November. If you want to exhibit in 2018 please get your expression of interest in sooner rather than later and spaces are filling up. Keep creative everyone.

## Recognising our fabulous volunteers

This month I would like to recognise the amazing contribution that Jacquie Watson gives to us at the arts centre. Jacquie has been volunteering for many many years

both as a regular Monday morning gallery reception minder and as a baker extraordinaire. Remember the High Tea a few years ago? Well Jacquie was one of the bakers and most recently helping out in many ways with the children in the School Holiday programmes. She is multi-talented asset to our organisation, always kind, helpful and positive.

*You are amazing Jacquie - Thank you*



# Upcoming Adults workshops



## VICW1: Appliqué Techniques with [Victoria Chin](#)

**Date:** Saturday 18 August 2018

**Time:** 10am – 3pm

**Duration:** 5 hours/ 1 day

**Level:** Adult - All levels

**Price:** \$65

**EAC Member:** \$50

Learn the basics of Appliqué with Victoria Chun who is a skilled needle worker with vast experience in all facets of appliqué.

Materials: bring your own threads, needles and calico or pay \$10 to the tutor for a material pack.

## VCW6: Plaster to Print with [Val Cuthbert](#)

Date: Saturday 18 August 2018 Time: 9:30am – 2pm

Duration: 4.5 hours/ 1 day Price: \$75 EAC Member: \$65

Students will scratch an A5 drypoint design onto plastic plate from images provided then use this design to print a small edition onto paper. We will then make and pour wet plaster over the drypoint plate to make a casting. Take home the small edition, the drypoint plate and the plaster cast of your work when it's dry. Artwork can be framed or hung on the wall.

All materials supplied - all you need to do is book your places, then arrive and enjoy



## JHW1: Malcolm Harrison Tribute Workshops with [Joan Hamilton](#)

**Time:** 11am – 2pm

**FREE**

**Session 3:** Sunday 19 August

**Session 4:** Sunday 26 August

**Session 5:** Sunday 16 September

Learn basic embroidery and appliqué stitching techniques inspired by Malcolm Harrison. Join this fun class and make this community quilt (right). You will need to bring your own basic sewing kit. Come to one or all of the sessions.

## Professional Development Talk:

“How to present and frame your artwork” and “How to photograph your artwork” with [Vanessa Grant and Paul Conroy](#)

**Time:** 6pm to 7pm

**Date:** Wednesday 26 September **FREE**

Join Vanessa Grant from Orewa Picture Framers and professional photographer Paul Conroy to learn about the tricks of the trade. Presentation of your artwork can mean acceptance into an art awards, selling your work or just the pride of framing artwork well for your own home. Vanessa and Paul will share with you their expert opinions and guide you through some common pitfalls and mistakes.



Please book your place for catering and planning purposes.

Phone 09 426 5570 email: [admin@estuaryart.org](mailto:admin@estuaryart.org)

*Orewa* **FRAMING** *Studio*

CUSTOM FRAMERS / PHOTO, CANVAS  
AND FINE ART PRINTING / LOCAL ART + SUPPLIES

## BCW1: Beginning Oil with [Bernadette Coetzer](#)

4 day weekend workshop

Dates: Day 1 - Saturday 15 Sept 2018

Day 2 - Saturday 22 Sept 2018

Day 3 - Saturday 29 Sept 2018

Day 4 - Saturday 06 October 2018

Time: 9:30am – 2:30pm (all days)

Duration: 4 days / 20 hours

Price: \$200 EAC Member: \$185

Oil painting doesn't have to be difficult! Join Bernadette, painting as Hannah, on a journey to discover the joy of painting your own masterpieces. Focussing on the needs of first-time painters, covering a range of useful topics such as:

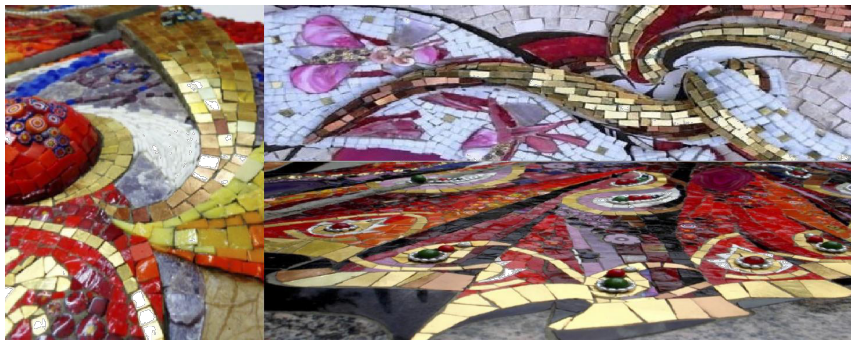
- Introduction to art materials, tools and art terminologies, Tips and techniques with art materials specifically for beginner artists (e.g. making your own Gesso); Learning to mix your own, unique paint colours whilst keeping them looking fresh;
- How to master the brush and palette knife;
- The key principles of colour and composition; Step-by-step completion of individual painting projects; and more.

Materials extra. Students can order a material pack ahead of time for this workshop or bring your own materials.

Student packs provided by the tutor = \$55 each

Material list/Student packs: 1 x Canvas, 2 x Canvas Panels and 1 x Canvas Pad Sheet. Tear off palettes. Variety of oil brushes. Oil paints. Rule cards. Exercise book. Please also bring along protective clothing, an apron and cleaning rags.

# Upcoming Adults workshops



## WORKSHOP OPPORTUNITIES WITH INTERNATIONAL MOSAIC ARTIST Carole Choucair Oueijan

Two different courses with Carole are on offer at the time of The Art of Mosaics Exhibition. Then 2 days after Exhibition.

You will need to book your place and make payment early to secure a place.

To register your interest you can PM Pat George on the New Zealand Mosaic Art Facebook page or email [foxhangerstudio@xtra.co.nz](mailto:foxhangerstudio@xtra.co.nz) or [nznationalmosaicexhibition2018@gmail.com](mailto:nznationalmosaicexhibition2018@gmail.com)

### Exhibition Course *Mosaic Drapery Direct Technique* Sunday 9th September to Tuesday 11 September

Contact Pat George [nznationalmosaicexhibition2018@gmail.com](mailto:nznationalmosaicexhibition2018@gmail.com)

Held at Estuary Arts Centre 214b Hibiscus Coast Highway, Orewa

Sunday 9th September 9am to 4 pm

Monday & Tuesday 9am to 4pm

Course Fee: \$520

Minimum 8 Maximum 13 students

### 2 days after the Exhibition Course *Bas – Relief with glass and stone* Friday 14th September to Sunday 16th September

Contact Pat George [foxhangerstudio@xtra.co.nz](mailto:foxhangerstudio@xtra.co.nz)

Held at Foxhanger Studio at Moewaka Villa  
45 Barlow Lane Matakohē Northland

Friday 14<sup>th</sup> September 10 am to 4pm

Saturday & Sunday 9am to 4pm

Course Fee: \$420

Minimum 8 Maximum 10 students

## CMW1: Learn to Paint workshop with Catherine Mitchell

**Date:** Sat 20 and Sun 21 October 2018 **Time:** 10am – 3pm (both days)

**Duration:** 11 hours / 2 days

**Level:**

Adult - Beginners

**Price:** \$140

**EAC Member:** \$120

Learn about colour mixing, tone, composition and acrylic painting techniques. As a beginner painter you will gain knowledge and confidence. You will complete 3 small projects.

Materials: Kit can be bought from the tutor at \$50 each or students could use the tutors materials for charge of \$15 - \$20.

## GWW3: Chinese painting Fish with Ginette Wang

Date: Sat 1 December 2018

Time: 10am – 3pm

Level: Adult - all levels

Price: \$115

EAC Member: \$95

Ginette will demonstrate and guide you step by step to paint fish with Chinese ink and watercolour. This workshop is great for people who have taken Ginette's Chinese painting workshop in 2017/2018 or have absolute no experience but with great interest to learn how to paint with this fun and exciting medium.

Materials extra (For return students, please bring your own material according to the list. For new students, Ginette can prepare the material needed for you that day at \$20 to be paid at the commencement of the workshop.)

## Selected Art and Framing retailers

- Factory Frames: 15% off custom framing
- Frames by Daniel: 15% off art materials
- Gordon Harris: 10% discount
- Studio Art Supplies: 10% discount
- Takapuna Art Supplies: 10% discount
- The Canvas company: 10 % discount
- The French Art Shop: 10 - 15% discount
- Emma Jean framing gallery: 10% discount
- Orewa Framing Studio: 10% off custom framing
- EACT volunteers: 10% off gift shop items



**\*\*MEMBERS DISCOUNTS\*\***  
become a member  
of Estuary Arts Centre

and save \$\$\$  
on your art and framing  
needs

# Notices



estuary arts centre

02 - 26 Nov 2018

**HIBISCUS & BAYS ART AWARDS**

**Call for Entry**  
**\$3000 Premier Award and Merit Awards**  
 Estuary Arts Centre, Orewa  
[www.estuaryarts.org](http://www.estuaryarts.org)

Hibiscus and Bays Local Board creative COMMUNITIES nz estuary arts centre



**THE ART of MOSAICS**  
 NEW ZEALAND NATIONAL MOSAIC ART EXHIBITION 2018

**A call to all MOSAIC ARTISTS & ENTHUSIASTS**

**5th September - 30th September 2018**  
 Estuary Arts Centre, Orewa

**EVENTS HIGHLIGHTS**

**NATIONAL MOSAIC COMPETITION**  
 Awards and prizes for best works in a range of categories including first-time entrant, youth award, People's Choice award Margaret Coupe award, best Reflections of New Zealand, Pacifica award best Reflections of Maori and Polynesian, Best 2D, best 3D works, overall best mosaic plus others...

**LET'S GET TOGETHER TO LEARN AND SHARE**  
 Attend the Opening night and awards ceremony on Friday 7th September 6pm-8pm and stay on for a couple of days of activities including the popular symposium, workshops and social events. There is also a special 3 day workshop planned 9,10,11 September with International Mosaic Artist Carole Choucair Oueijan.

**REGISTRATION**  
 Register your interest by email at [nznationalmosaicexhibition2018@gmail.com](mailto:nznationalmosaicexhibition2018@gmail.com)  
 We would love to hear from you. Forward to anyone who might be interested.

**OREWA**  
 The Estuary Arts Centre is situated in Orewa on the Hibiscus Coast Highway, only 25 minutes from Auckland city centre. "Estuary Arts Centre is a creative artistic hub belonging to and valued by the community. It aspires to enrich the lives of people of all ages and abilities, involving and engaging them in arts appreciation and creative opportunities. Entrance into the Gallery is free and there is ample parking. The Weka Gift Shop and onsite Driftwood Café, make this an inviting cultural destination, a convenient meeting spot or a stopover for the whole family. Orewa's beautiful beaches and parks, Centrestage Theatre, the Youth Centre, the Orewa River estuary and the popular Te Ara Tahuna walkway and cycleway are all in close proximity.

**MORE INFORMATION**  
 For more information find us on Facebook under **NEW ZEALAND MOSAIC ART FACEBOOK**

**Estuary Arts Charitable Trust Annual General Meeting**

**Tuesday 25 September 2018**  
 7pm, Studio 1

**Nominations NOW open**  
 forms are available from the  
**Manager**  
**All Welcome**



**WE WANT YOU!!!**

**Membership subs for 2018/19 now due**

Family \$45 Single \$35 Gold card / student \$25

Contact a Staff or Trust Board member during office hours only:

Mon to Fri, 9am - 4pm only Please note Weekends are manned by volunteers only

Manager (Kim Boyd): [manager@estuaryarts.org](mailto:manager@estuaryarts.org)

Accounts (Kris Poole): [accounts@estuaryarts.org](mailto:accounts@estuaryarts.org)

Education (Leigh Freeman): [learn@estuaryarts.org](mailto:learn@estuaryarts.org)

Customer Service / volunteers: (Pam Atkinson): [admin@estuaryarts.org](mailto:admin@estuaryarts.org)

• Phone: 09 426 5570 021 172 4113 (Txt Kim)

• Find us on Facebook

• Visit our website [www.estuaryarts.org](http://www.estuaryarts.org)

• Post a letter to PO Box 480, Orewa, 0974

With grateful support from: